

FT Athletic

Light
Regular
Medium
Semibold
Bold
Heavy

LT
RG
MD
SB
BD
HV

Overview

Julius Winfield
Erving II, "DR. J"
was born
ON FEBRUARY
22, 1950,
in Roosevelt, N.Y.

[1977], Back of
HOLLYWOOD*
Slam Dunk
ALL STAR GAME
Jefferson High
VARSITY
Hall of Fame
MAJOR LEAGUES
White tee
NEW YORK CITY

Space Invaders
ATARI 8 BIT
brusselmans
STEDELIJK
New Collection
Spring, Summer
B. LANCASTER
Frankenheimer
RAYGUN
MAGAZINE #23

The Hollywood Sign is an American landmark and cultural icon overlooking Hollywood, Los Angeles, California. Originally the Hollywoodland Sign, it is situated on Mount Lee, in the Beachwood Canyon area of the Santa Monica Mountains. Spelling out the word “Hollywood” in 50-foot-tall (15.2 m) white uppercase letters and 450 feet (137.2 m) long, it was originally erected in 1923 as a temporary advertisement for a local real estate development, but due to increasing recognition the sign was left up, and replaced in 1978 with a more durable all-steel structure. Among the best-known landmarks in both California and the United States, the sign makes frequent appearances in popular culture, particularly in establishing shots for films and television programs set in or around Hollywood. Signs of similar style, but spelling different words, are frequently seen as parodies. The Hollywood Chamber of Commerce holds trademark rights to the Hollywood Sign but only for certain uses. Because of its widespread recognizability, the sign has been a frequent target of pranks and vandalism across the decades. It has since undergone restoration, including the installation of a security system to deter mischief. The sign is protected and promoted by the nonprofit “The Hollywood Sign Trust”, while its site and the surrounding land are part of Griffith Park. Visitors can hike to the sign from the Bronson Canyon entrance to Griffith Park or from Griffith Observatory. There is also a trailhead near the Lake Hollywood Reservoir outside of Griffith Park, and although not an access point in itself, there is a popular scenic vista point around Lake Hollywood Park near the trailhead. The original sign was erected in 1923 and originally read “HOLLYWOODLAND” to promote the

name of a new housing development in the hills above the Hollywood district of Los Angeles. Real estate developers Woodruff and Shoults called their development “Hollywoodland” and advertised it as a “superb environment without excessive cost on the Hollywood side of the hills.” They contracted the Crescent Sign Company to erect thirteen south-facing letters on the hillside. Crescent owner Thomas Fisk Goff (1890–1984) designed the wooden sign in 30-foot-wide (9.1 m) and 50-foot-high (15.2 m) white block letters. Studded with around 4,000 light bulbs, the completed sign alternated between flashing in successive segments “HOLLY”, “WOOD”, and “LAND” and as a whole. Below the sign was a searchlight to attract more attention. The poles that supported the sign were hauled to the site by mules. The project cost \$21,000, equivalent to \$360,000 in 2022. The sign was officially dedicated in 1923, intended to last only a year and a half. The rise of American cinema in Los Angeles during the Golden Age of Hollywood gave it widespread visibility, causing it to be left beyond that, for over a quarter century still spelling “Hollywoodland”. The illumination was switched off about 1933, new owners deciding it was too expensive. The sign’s unprotected wood-and-sheet-metal structure deteriorated over the years. After a severe windstorm on February 10, 1978, the first O was splintered and broken, resembling a lowercase u, and the third O had fallen down completely, leaving the now-dilapidated sign reading “HuLLYWO O.” In 1978, in large part because of the public campaign to restore the landmark by Alice Cooper, founder of the Alice Cooper band, the Chamber set out to replace the severely deteriorated sign with a more perma-

The varsity jacket, often called the letterman jacket, is more than just a piece of clothing—it’s an enduring symbol of youth, achievement, and American high school culture. Originally emerging in the late 19th century at Harvard University, the jacket was awarded to student-athletes who had earned a letter for their participation in varsity sports. The design was simple but striking: wool body, leather sleeves, and a large letter sewn onto the chest representing the school or team. Over time, this functional garment became a cultural icon, signaling not just athletic success but a sense of belonging and identity within a school or community. Beyond its origins on the playing field, the varsity jacket has transcended its athletic roots to become a fashion statement embraced by multiple generations. Its appeal lies in its balance between casual comfort and symbolic prestige. Worn over jeans, skirts, or hoodies, the jacket adds an air of effortless cool, simultaneously nostalgic and contemporary. Designers and streetwear brands have reimagined the classic silhouette in countless ways, experimenting with colors, materials, and embellishments, yet the essential elements—a contrasting sleeve, ribbed cuffs, and the emblematic letter—remain central to its identity. The cultural resonance of the varsity jacket extends into music, film, and social media. From 1980s teen movies to hip-hop videos and modern Instagram aesthetics, it represents both achievement and rebellion, a garment that conveys confidence and belonging. Its symbolism has broadened:

Pavement’s “Major Leagues” stands out as one of the band’s most quietly powerful and emotionally resonant tracks, serving as a reflective close to their original recording career. From the first echoing piano chords and measured, unhurried drums, the song establishes a mood of subdued melancholy tinged with subtle grandeur. Stephen Malkmus’s vocals glide effortlessly over the instrumentation, alternating between confessional intimacy and cryptic detachment. Lines like “Lip balm on watery clay / Relationships, hey hey hey” capture the awkward humor, vulnerability, and bittersweet tension inherent in human connection, balancing emotional weight with playful ambiguity. Musically, “Major Leagues” exemplifies Pavement’s ability to blend casual indie rock textures with sophisticated layering. The guitars are both delicate and atmospheric, the percussion steady yet understated, and Nigel Godrich’s production ensures every element is crisp and warm without ever feeling overproduced. The recurring refrain, “bring on the major leagues,” acts as a provocative invitation – a flirtation with risk, commitment, and emotional exposure. There’s a tension throughout the track between desire and hesitation, rendering it intimate while simultaneously resonating on a universal level. Though reportedly recorded in only one or two takes, the song exudes precision and clarity, reflecting the band’s instinctive songwriting prowess. Its understated grandeur, clever lyricism, and nuanced instrumentation showcase Pavement at the peak of their artistic subtlety. In

The varsity jacket, often called the letterman jacket, is more than just a piece of clothing—it’s an enduring symbol of youth, achievement, and American high school culture. Originally emerging in the late 19th century at Harvard University, the jacket was awarded to student-athletes who had earned a letter for their participation in varsity sports. The design was simple but striking: wool body, leather sleeves, and a large letter sewn onto the chest representing the school or team. Over time, this functional garment became a cultural icon, signaling not just athletic success but a sense of belonging and identity within a school or community. Beyond its origins on the playing field, the varsity jacket has transcended its athletic roots to become a fashion statement embraced by multiple generations. Its appeal lies in its balance between casual comfort and symbolic prestige. Worn over jeans, skirts, or hoodies, the jacket adds an air of effortless cool, simultaneously nostalgic and contemporary. Designers and streetwear brands have reimagined the classic silhouette in countless ways, experimenting with colors, materials, and embellishments, yet the essential elements—a

Pavement’s “Major Leagues” stands out as one of the band’s most quietly powerful and emotionally resonant tracks, serving as a reflective close to their original recording career. From the first echoing piano chords and measured, unhurried drums, the song establishes a mood of subdued melancholy tinged with subtle grandeur. Stephen Malkmus’s vocals glide effortlessly over the instrumentation, alternating between confessional intimacy and cryptic detachment. Lines like “Lip balm on watery clay / Relationships, hey hey hey” capture the awkward humor, vulnerability, and bittersweet tension inherent in human connection, balancing emotional weight with playful ambiguity. Musically, “Major Leagues” exemplifies Pavement’s ability to blend casual indie rock textures with sophisticated layering. The guitars are both delicate and atmospheric, the percussion steady yet understated, and Nigel Godrich’s production ensures every element is crisp and warm without ever feeling overproduced. The recurring refrain, “bring on the major leagues,” acts as a provocative invitation – a flirtation with risk, commitment, and emotional exposure. There’s a tension throughout the track between-

The varsity jacket, often called the letterman jacket, is more than just a piece of clothing—it’s an enduring symbol of youth, achievement, and American high school culture. Originally emerging in the late 19th century at Harvard University, the jacket was awarded to student-athletes who had earned a letter for their participation in varsity sports. The design was simple but striking: wool body, leather sleeves, and a large letter sewn onto the chest representing the school or team. Over time, this functional garment became a cultural icon, signaling not just athletic success but a sense of belonging and identity within a school or community. Beyond its origins on the playing field, the varsity jacket has transcended its athletic roots to become a fashion statement embraced by multiple generations. Its appeal lies in its balance between casual comfort and symbolic prestige. Worn over jeans, skirts, or hoodies, the jacket adds an air of effortless cool, simultaneously nostalgic and contemporary. Designers and streetwear brands have reimagined the classic silhouette in countless ways, experimenting with colors, materials, and embellishments, yet the essential elements—a contrasting sleeve, ribbed cuffs, and the emblematic letter—remain central to its identity. The cultural resonance of the varsity jacket extends into music, film, and social media. From 1980s teen movies to hip-hop videos and modern Instagram aesthetics, it represents both achievement and rebellion, a garment that conveys confidence and belonging. Its symbolism has broadened: now, wearing a varsity jacket need not signify athletic prowess; it can express style, nostalgia, or affiliation with a particular community or subculture. Moreover, the jacket embodies the tension between

Pavement’s “Major Leagues” stands out as one of the band’s most quietly powerful and emotionally resonant tracks, serving as a reflective close to their original recording career. From the first echoing piano chords and measured, unhurried drums, the song establishes a mood of subdued melancholy tinged with subtle grandeur. Stephen Malkmus’s vocals glide effortlessly over the instrumentation, alternating between confessional intimacy and cryptic detachment. Lines like “Lip balm on watery clay / Relationships, hey hey hey” capture the awkward humor, vulnerability, and bittersweet tension inherent in human connection, balancing emotional weight with playful ambiguity. Musically, “Major Leagues” exemplifies Pavement’s ability to blend casual indie rock textures with sophisticated layering. The guitars are both delicate and atmospheric, the percussion steady yet understated, and Nigel Godrich’s production ensures every element is crisp and warm without ever feeling overproduced. The recurring refrain, “bring on the major leagues,” acts as a provocative invitation – a flirtation with risk, commitment, and emotional exposure. There’s a tension throughout the track between desire and hesitation, rendering it intimate while simultaneously resonating on a universal level. Though reportedly recorded in only one or two takes, the song exudes precision and clarity, reflecting the band’s instinctive songwriting prowess. Its understated grandeur, clever lyricism, and nuanced instrumentation showcase Pavement at the peak of their artistic subtlety. In the broader context of the band’s discography, “Major Leagues” shares the melancholic wit of “Gold Soundz” and the lyrical ambiguity of “Cut Your Hair,” yet carries a reflective ma-

Julius Winfield
Erving II, “DR. J”
was born
ON FEBRUARY
22, 1950,
in Roosevelt, N.Y.

(1977), Back of
HOLLYWOOD*
Slam Dunk
ALL STAR GAME
Jefferson High
VARSITY
Hall of Fame
MAJOR LEAGUES
White tee
NEW YORK CITY

Space Invaders
ATARI 8 BIT
brusselmans
STEDELIJK
New Collection
Spring, Summer
B. LANCASTER
Frankenheimer
RAYGUN
MAGAZINE #23

Formula Type	FT Athletic	Specimen	Regular	16 points	(10/48)
<p>The Hollywood Sign is an American landmark and cultural icon overlooking Hollywood, Los Angeles, California. Originally the Hollywoodland Sign, it is situated on Mount Lee, in the Beachwood Canyon area of the Santa Monica Mountains. Spelling out the word “Hollywood” in 50-foot-tall [15.2 m] white uppercase letters and 450 feet [137.2 m] long, it was originally erected in 1923 as a temporary advertisement for a local real estate development, but due to increasing recognition the sign was left up, and replaced in 1978 with a more durable all-steel structure. Among the best-known landmarks in both California and the United States, the sign makes frequent appearances in popular culture, particularly in establishing shots for films and television programs set in or around Hollywood. Signs of similar style, but spelling different words, are frequently seen as parodies. The Hollywood Chamber of Commerce holds trademark rights to the Hollywood Sign but only for certain uses. Because of its widespread recognizability, the sign has been a frequent target of pranks and vandalism across the decades. It has since undergone restoration, including the installation of a security system to deter mischief. The sign is protected and promoted by the nonprofit “The Hollywood Sign Trust”, while its site and the surrounding land are part of Griffith Park. Visitors can hike to the sign from the Bronson Canyon entrance to Griffith Park or from Griffith Observatory. There is also a trailhead near the Lake Hollywood Reservoir outside of Griffith Park, and although not an access point in itself, there is a popular scenic vista point around Lake Hollywood Park near the trailhead. The original sign was erected</p>			<p>in 1923 and originally read “HOLLYWOODLAND” to promote the name of a new housing development in the hills above the Hollywood district of Los Angeles. Real estate developers Woodruff and Shoults called their development “Hollywoodland” and advertised it as a “superb environment without excessive cost on the Hollywood side of the hills.” They contracted the Crescent Sign Company to erect thirteen south-facing letters on the hillside. Crescent owner Thomas Fisk Goff (1890–1984) designed the wooden sign in 30-foot-wide [9.1 m] and 50-foot-high [15.2 m] white block letters. Studded with around 4,000 light bulbs, the completed sign alternated between flashing in successive segments “HOLLY”, “WOOD”, and “LAND” and as a whole. Below the sign was a searchlight to attract more attention. The poles that supported the sign were hauled to the site by mules. The project cost \$21,000, equivalent to \$360,000 in 2022. The sign was officially dedicated in 1923, intended to last only a year and a half. The rise of American cinema in Los Angeles during the Golden Age of Hollywood gave it widespread visibility, causing it to be left beyond that, for over a quarter century still spelling “Hollywoodland”. The illumination was switched off about 1933, new owners deciding it was too expensive. The sign’s unprotected wood-and-sheet-metal structure deteriorated over the years. After a severe windstorm on February 10, 1978, the first O was splintered and broken, resembling a lowercase u, and the third O had fallen down completely, leaving the now-dilapidated sign reading “HuLLYWO D.” In 1978, in large part because of the public campaign to restore the landmark by Alice Cooper, founder of the Alice Cooper band, the Cham-</p>		

The varsity jacket, often called the letterman jacket, is more than just a piece of clothing—it’s an enduring symbol of youth, achievement, and American high school culture. Originally emerging in the late 19th century at Harvard University, the jacket was awarded to student-athletes who had earned a letter for their participation in varsity sports. The design was simple but striking: wool body, leather sleeves, and a large letter sewn onto the chest representing the school or team. Over time, this functional garment became a cultural icon, signaling not just athletic success but a sense of belonging and identity within a school or community. Beyond its origins on the playing field, the varsity jacket has transcended its athletic roots to become a fashion statement embraced by multiple generations. Its appeal lies in its balance between casual comfort and symbolic prestige. Worn over jeans, skirts, or hoodies, the jacket adds an air of effortless cool, simultaneously nostalgic and contemporary. Designers and streetwear brands have reimagined the classic silhouette in countless ways, experimenting with colors, materials, and embellishments, yet the essential elements—a contrasting sleeve, ribbed cuffs, and the emblematic letter—remain central to its identity. The cultural resonance of the varsity jacket extends into music, film, and social media. From 1980s teen movies to hip-hop videos and modern Instagram aesthetics, it represents both achievement and rebellion, a garment that conveys confidence and belonging. Its symbolism has

Pavement’s “Major Leagues” stands out as one of the band’s most quietly powerful and emotionally resonant tracks, serving as a reflective close to their original recording career. From the first echoing piano chords and measured, unhurried drums, the song establishes a mood of subdued melancholy tinged with subtle grandeur. Stephen Malkmus’s vocals glide effortlessly over the instrumentation, alternating between confessional intimacy and cryptic detachment. Lines like “Lip balm on watery clay / Relationships, hey hey hey” capture the awkward humor, vulnerability, and bittersweet tension inherent in human connection, balancing emotional weight with playful ambiguity. Musically, “Major Leagues” exemplifies Pavement’s ability to blend casual indie rock textures with sophisticated layering. The guitars are both delicate and atmospheric, the percussion steady yet understated, and Nigel Godrich’s production ensures every element is crisp and warm without ever feeling overproduced. The recurring refrain, “bring on the major leagues,” acts as a provocative invitation – a flirtation with risk, commitment, and emotional exposure. There’s a tension throughout the track between desire and hesitation, rendering it intimate while simultaneously resonating on a universal level. Though reportedly recorded in only one or two takes, the song exudes precision and clarity, reflecting the band’s instinctive songwriting prowess. Its understated grandeur, clever lyricism, and nuanced instrumentation showcase Pavement at

The varsity jacket, often called the letterman jacket, is more than just a piece of clothing—it’s an enduring symbol of youth, achievement, and American high school culture. Originally emerging in the late 19th century at Harvard University, the jacket was awarded to student-athletes who had earned a letter for their participation in varsity sports. The design was simple but striking: wool body, leather sleeves, and a large letter sewn onto the chest representing the school or team. Over time, this functional garment became a cultural icon, signaling not just athletic success but a sense of belonging and identity within a school or community. Beyond its origins on the playing field, the varsity jacket has transcended its athletic roots to become a fashion statement embraced by multiple generations. Its appeal lies in its balance between casual comfort and symbolic prestige. Worn over jeans, skirts, or hoodies, the jacket adds an air of effortless cool, simultaneously nostalgic and contemporary. Designers and streetwear brands have reimagined the classic silhouette in countless ways, experimenting with colors, materials, and embellishments, yet the es-

Pavement’s “Major Leagues” stands out as one of the band’s most quietly powerful and emotionally resonant tracks, serving as a reflective close to their original recording career. From the first echoing piano chords and measured, unhurried drums, the song establishes a mood of subdued melancholy tinged with subtle grandeur. Stephen Malkmus’s vocals glide effortlessly over the instrumentation, alternating between confessional intimacy and cryptic detachment. Lines like “Lip balm on watery clay / Relationships, hey hey hey” capture the awkward humor, vulnerability, and bittersweet tension inherent in human connection, balancing emotional weight with playful ambiguity. Musically, “Major Leagues” exemplifies Pavement’s ability to blend casual indie rock textures with sophisticated layering. The guitars are both delicate and atmospheric, the percussion steady yet understated, and Nigel Godrich’s production ensures every element is crisp and warm without ever feeling overproduced. The recurring refrain, “bring on the major leagues,” acts as a provocative invitation – a flirtation with risk, commitment, and emotional expo-

The varsity jacket, often called the letterman jacket, is more than just a piece of clothing—it’s an enduring symbol of youth, achievement, and American high school culture. Originally emerging in the late 19th century at Harvard University, the jacket was awarded to student-athletes who had earned a letter for their participation in varsity sports. The design was simple but striking: wool body, leather sleeves, and a large letter sewn onto the chest representing the school or team. Over time, this functional garment became a cultural icon, signaling not just athletic success but a sense of belonging and identity within a school or community. Beyond its origins on the playing field, the varsity jacket has transcended its athletic roots to become a fashion statement embraced by multiple generations. Its appeal lies in its balance between casual comfort and symbolic prestige. Worn over jeans, skirts, or hoodies, the jacket adds an air of effortless cool, simultaneously nostalgic and contemporary. Designers and streetwear brands have reimagined the classic silhouette in countless ways, experimenting with colors, materials, and embellishments, yet the essential elements—a contrasting sleeve, ribbed cuffs, and the emblematic letter—remain central to its identity. The cultural resonance of the varsity jacket extends into music, film, and social media. From 1980s teen movies to hip-hop videos and modern Instagram aesthetics, it represents both achievement and rebellion, a garment that conveys confidence and belonging. Its symbolism has broadened: now, wearing a varsity jacket need not signify athletic prowess; it can express style, nostalgia, or affiliation with a particular community or subculture. Moreover, the jacket embodies the tension

Pavement’s “Major Leagues” stands out as one of the band’s most quietly powerful and emotionally resonant tracks, serving as a reflective close to their original recording career. From the first echoing piano chords and measured, unhurried drums, the song establishes a mood of subdued melancholy tinged with subtle grandeur. Stephen Malkmus’s vocals glide effortlessly over the instrumentation, alternating between confessional intimacy and cryptic detachment. Lines like “Lip balm on watery clay / Relationships, hey hey hey” capture the awkward humor, vulnerability, and bittersweet tension inherent in human connection, balancing emotional weight with playful ambiguity. Musically, “Major Leagues” exemplifies Pavement’s ability to blend casual indie rock textures with sophisticated layering. The guitars are both delicate and atmospheric, the percussion steady yet understated, and Nigel Godrich’s production ensures every element is crisp and warm without ever feeling overproduced. The recurring refrain, “bring on the major leagues,” acts as a provocative invitation – a flirtation with risk, commitment, and emotional exposure. There’s a tension throughout the track between desire and hesitation, rendering it intimate while simultaneously resonating on a universal level. Though reportedly recorded in only one or two takes, the song exudes precision and clarity, reflecting the band’s instinctive songwriting prowess. Its understated grandeur, clever lyricism, and nuanced instrumentation showcase Pavement at the peak of their artistic subtlety. In the broader context of the band’s discography, “Major Leagues” shares the melancholic wit of “Gold Soundz” and the lyrical ambiguity of “Cut Your Hair,” yet carries a reflective

Julius Winfield
Erving II, “DR. J”
was born
ON FEBRUARY
22, 1950,
in Roosevelt, N.Y.

(1977), Back of
HOLLYWOOD*

Slam Dunk
ALL STAR GAME
Jefferson High
VARSITY
Hall of Fame
MAJOR LEAGUES
White tee
NEW YORK CITY

Space Invaders
ATARI 8 BIT
brusselmans
STEDELIJK
New Collection
Spring, Summer
B. LANCASTER
Frankenheimer
RAYGUN
MAGAZINE #23

The Hollywood Sign is an American landmark and cultural icon overlooking Hollywood, Los Angeles, California. Originally the Hollywoodland Sign, it is situated on Mount Lee, in the Beachwood Canyon area of the Santa Monica Mountains. Spelling out the word “Hollywood” in 50-foot-tall (15.2 m) white uppercase letters and 450 feet (137.2 m) long, it was originally erected in 1923 as a temporary advertisement for a local real estate development, but due to increasing recognition the sign was left up, and replaced in 1978 with a more durable all-steel structure. Among the best-known landmarks in both California and the United States, the sign makes frequent appearances in popular culture, particularly in establishing shots for films and television programs set in or around Hollywood. Signs of similar style, but spelling different words, are frequently seen as parodies. The Hollywood Chamber of Commerce holds trademark rights to the Hollywood Sign but only for certain uses. Because of its widespread recognizability, the sign has been a frequent target of pranks and vandalism across the decades. It has since undergone restoration, including the installation of a security system to deter mischief. The sign is protected and promoted by the nonprofit “The Hollywood Sign Trust”, while its site and the surrounding land are part of Griffith Park. Visitors can hike to the sign from the Bronson Canyon entrance to Griffith Park or from Griffith Observatory. There is also a trailhead near the Lake Hollywood Reservoir outside of Griffith Park, and although not an access point in itself, there is a popular scenic vista point around Lake Hollywood Park near the trailhead. The original sign was erected

in 1923 and originally read “HOLLYWOODLAND” to promote the name of a new housing development in the hills above the Hollywood district of Los Angeles. Real estate developers Woodruff and Shoults called their development “Hollywoodland” and advertised it as a “superb environment without excessive cost on the Hollywood side of the hills.” They contracted the Crescent Sign Company to erect thirteen south-facing letters on the hillside. Crescent owner Thomas Fisk Goff (1890–1984) designed the wooden sign in 30-foot-wide (9.1 m) and 50-foot-high (15.2 m) white block letters. Studded with around 4,000 light bulbs, the completed sign alternated between flashing in successive segments “HOLLY”, “WOOD”, and “LAND” and as a whole. Below the sign was a searchlight to attract more attention. The poles that supported the sign were hauled to the site by mules. The project cost \$21,000, equivalent to \$360,000 in 2022. The sign was officially dedicated in 1923, intended to last only a year and a half. The rise of American cinema in Los Angeles during the Golden Age of Hollywood gave it widespread visibility, causing it to be left beyond that, for over a quarter century still spelling “Hollywoodland”. The illumination was switched off about 1933, new owners deciding it was too expensive. The sign’s unprotected wood-and-sheet-metal structure deteriorated over the years. After a severe windstorm on February 10, 1978, the first O was splintered and broken, resembling a lowercase u, and the third O had fallen down completely, leaving the now-dilapidated sign reading “HuLLYWO D.” In 1978, in large part because of the public campaign to restore the landmark by Alice Cooper, founder of the Alice

The varsity jacket, often called the letterman jacket, is more than just a piece of clothing—it’s an enduring symbol of youth, achievement, and American high school culture. Originally emerging in the late 19th century at Harvard University, the jacket was awarded to student-athletes who had earned a letter for their participation in varsity sports. The design was simple but striking: wool body, leather sleeves, and a large letter sewn onto the chest representing the school or team. Over time, this functional garment became a cultural icon, signaling not just athletic success but a sense of belonging and identity within a school or community. Beyond its origins on the playing field, the varsity jacket has transcended its athletic roots to become a fashion statement embraced by multiple generations. Its appeal lies in its balance between casual comfort and symbolic prestige. Worn over jeans, skirts, or hoodies, the jacket adds an air of effortless cool, simultaneously nostalgic and contemporary. Designers and streetwear brands have reimagined the classic silhouette in countless ways, experimenting with colors, materials, and embellishments, yet the essential elements—a contrasting sleeve, ribbed cuffs, and the emblematic letter—remain central to its identity. The cultural resonance of the varsity jacket extends into music, film, and social media. From 1980s teen movies to hip-hop videos and modern Instagram aesthetics, it represents both achievement and rebellion, a garment that conveys confidence and

Pavement’s “Major Leagues” stands out as one of the band’s most quietly powerful and emotionally resonant tracks, serving as a reflective close to their original recording career. From the first echoing piano chords and measured, unhurried drums, the song establishes a mood of subdued melancholy tinged with subtle grandeur. Stephen Malkmus’s vocals glide effortlessly over the instrumentation, alternating between confessional intimacy and cryptic detachment. Lines like “Lip balm on watery clay / Relationships, hey hey hey” capture the awkward humor, vulnerability, and bittersweet tension inherent in human connection, balancing emotional weight with playful ambiguity. Musically, “Major Leagues” exemplifies Pavement’s ability to blend casual indie rock textures with sophisticated layering. The guitars are both delicate and atmospheric, the percussion steady yet understated, and Nigel Godrich’s production ensures every element is crisp and warm without ever feeling overproduced. The recurring refrain, “bring on the major leagues,” acts as a provocative invitation – a flirtation with risk, commitment, and emotional exposure. There’s a tension throughout the track between desire and hesitation, rendering it intimate while simultaneously resonating on a universal level. Though reportedly recorded in only one or two takes, the song exudes precision and clarity, reflecting the band’s instinctive songwriting prowess. Its understated grandeur, clever lyricism, and nuanced instrumentation showca-

The varsity jacket, often called the letterman jacket, is more than just a piece of clothing—it’s an enduring symbol of youth, achievement, and American high school culture. Originally emerging in the late 19th century at Harvard University, the jacket was awarded to student-athletes who had earned a letter for their participation in varsity sports. The design was simple but striking: wool body, leather sleeves, and a large letter sewn onto the chest representing the school or team. Over time, this functional garment became a cultural icon, signaling not just athletic success but a sense of belonging and identity within a school or community. Beyond its origins on the playing field, the varsity jacket has transcended its athletic roots to become a fashion statement embraced by multiple generations. Its appeal lies in its balance between casual comfort and symbolic prestige. Worn over jeans, skirts, or hoodies, the jacket adds an air of effortless cool, simultaneously nostalgic and contemporary. Designers and streetwear brands have reimagined the classic silhouette in countless ways, experimenting with colors, materials,

Pavement’s “Major Leagues” stands out as one of the band’s most quietly powerful and emotionally resonant tracks, serving as a reflective close to their original recording career. From the first echoing piano chords and measured, unhurried drums, the song establishes a mood of subdued melancholy tinged with subtle grandeur. Stephen Malkmus’s vocals glide effortlessly over the instrumentation, alternating between confessional intimacy and cryptic detachment. Lines like “Lip balm on watery clay / Relationships, hey hey hey” capture the awkward humor, vulnerability, and bittersweet tension inherent in human connection, balancing emotional weight with playful ambiguity. Musically, “Major Leagues” exemplifies Pavement’s ability to blend casual indie rock textures with sophisticated layering. The guitars are both delicate and atmospheric, the percussion steady yet understated, and Nigel Godrich’s production ensures every element is crisp and warm without ever feeling overproduced. The recurring refrain, “bring on the major leagues,” acts as a provocative invitation – a flirtation with risk, commitment, and emotional expo-

The varsity jacket, often called the letterman jacket, is more than just a piece of clothing—it’s an enduring symbol of youth, achievement, and American high school culture. Originally emerging in the late 19th century at Harvard University, the jacket was awarded to student-athletes who had earned a letter for their participation in varsity sports. The design was simple but striking: wool body, leather sleeves, and a large letter sewn onto the chest representing the school or team. Over time, this functional garment became a cultural icon, signaling not just athletic success but a sense of belonging and identity within a school or community. Beyond its origins on the playing field, the varsity jacket has transcended its athletic roots to become a fashion statement embraced by multiple generations. Its appeal lies in its balance between casual comfort and symbolic prestige. Worn over jeans, skirts, or hoodies, the jacket adds an air of effortless cool, simultaneously nostalgic and contemporary. Designers and streetwear brands have reimagined the classic silhouette in countless ways, experimenting with colors, materials, and embellishments, yet the essential elements—a contrasting sleeve, ribbed cuffs, and the emblematic letter—remain central to its identity. The cultural resonance of the varsity jacket extends into music, film, and social media. From 1980s teen movies to hip-hop videos and modern Instagram aesthetics, it represents both achievement and rebellion, a garment that conveys confidence and belonging. Its symbolism has broadened: now, wearing a varsity jacket need not signify athletic prowess; it can express style, nostalgia, or affiliation with a particular community or

Pavement’s “Major Leagues” stands out as one of the band’s most quietly powerful and emotionally resonant tracks, serving as a reflective close to their original recording career. From the first echoing piano chords and measured, unhurried drums, the song establishes a mood of subdued melancholy tinged with subtle grandeur. Stephen Malkmus’s vocals glide effortlessly over the instrumentation, alternating between confessional intimacy and cryptic detachment. Lines like “Lip balm on watery clay / Relationships, hey hey hey” capture the awkward humor, vulnerability, and bittersweet tension inherent in human connection, balancing emotional weight with playful ambiguity. Musically, “Major Leagues” exemplifies Pavement’s ability to blend casual indie rock textures with sophisticated layering. The guitars are both delicate and atmospheric, the percussion steady yet understated, and Nigel Godrich’s production ensures every element is crisp and warm without ever feeling overproduced. The recurring refrain, “bring on the major leagues,” acts as a provocative invitation – a flirtation with risk, commitment, and emotional exposure. There’s a tension throughout the track between desire and hesitation, rendering it intimate while simultaneously resonating on a universal level. Though reportedly recorded in only one or two takes, the song exudes precision and clarity, reflecting the band’s instinctive songwriting prowess. Its understated grandeur, clever lyricism, and nuanced instrumentation showcase Pavement at the peak of their artistic subtlety. In the broader context of the band’s discography, “Major Leagues” shares the melancholic wit of “Gold Soundz” and the lyrical ambiguity of “Cut Your

Julius Winfield
Erving II, “DR. J”
was born
ON FEBRUARY
22, 1950,
in Roosevelt, N.Y.

(1977), Back of
HOLLYWOOD*
Slam Dunk
ALL STAR GAME
Jefferson High
VARSITY
Hall of Fame
MAJOR LEAGUES
White tee
NEW YORK CITY

Space Invaders
ATARI 8 BIT
brusselmans
STEDELIJK
New Collection
Spring, Summer
B. LANCASTER
Frankenheimer
RAYGUN
MAGAZINE #23

The Hollywood Sign is an American landmark and cultural icon overlooking Hollywood, Los Angeles, California. Originally the Hollywoodland Sign, it is situated on Mount Lee, in the Beachwood Canyon area of the Santa Monica Mountains. Spelling out the word “Hollywood” in 50-foot-tall (15.2 m) white uppercase letters and 450 feet (137.2 m) long, it was originally erected in 1923 as a temporary advertisement for a local real estate development, but due to increasing recognition the sign was left up, and replaced in 1978 with a more durable all-steel structure. Among the best-known landmarks in both California and the United States, the sign makes frequent appearances in popular culture, particularly in establishing shots for films and television programs set in or around Hollywood. Signs of similar style, but spelling different words, are frequently seen as parodies. The Hollywood Chamber of Commerce holds trademark rights to the Hollywood Sign but only for certain uses. Because of its widespread recognizability, the sign has been a frequent target of pranks and vandalism across the decades. It has since undergone restoration, including the installation of a security system to deter mischief. The sign is protected and promoted by the nonprofit “The Hollywood Sign Trust”, while its site and the surrounding land are part of Griffith Park. Visitors can hike to the sign from the Bronson Canyon entrance to Griffith Park or from Griffith Observatory. There is also a trailhead near the Lake Hollywood Reservoir outside of Griffith Park, and although not an access point in itself, there is a popular scenic vista point around Lake Hollywood Park near

the trailhead. The original sign was erected in 1923 and originally read “HOLLYWOODLAND” to promote the name of a new housing development in the hills above the Hollywood district of Los Angeles. Real estate developers Woodruff and Shoults called their development “Hollywoodland” and advertised it as a “superb environment without excessive cost on the Hollywood side of the hills.” They contracted the Crescent Sign Company to erect thirteen south-facing letters on the hillside. Crescent owner Thomas Fisk Goff (1890–1984) designed the wooden sign in 30-foot-wide (9.1 m) and 50-foot-high (15.2 m) white block letters. Studded with around 4,000 light bulbs, the completed sign alternated between flashing in successive segments “HOLLY”, “WOOD”, and “LAND” and as a whole. Below the sign was a searchlight to attract more attention. The poles that supported the sign were hauled to the site by mules. The project cost \$21,000, equivalent to \$360,000 in 2022. The sign was officially dedicated in 1923, intended to last only a year and a half. The rise of American cinema in Los Angeles during the Golden Age of Hollywood gave it widespread visibility, causing it to be left beyond that, for over a quarter century still spelling “Hollywoodland”. The illumination was switched off about 1933, new owners deciding it was too expensive. The sign’s unprotected wood-and-sheet-metal structure deteriorated over the years. After a severe windstorm on February 10, 1978, the first O was splintered and broken, resembling a lowercase u, and the third O had fallen down completely, leaving the now-dilapidated sign reading “HuLLYWO D.” In 1978, in large part because

Formula Type	FT Athletic	Specimen	Semibold	12, 10, 8 points	(19/48)			
<p>The varsity jacket, often called the letterman jacket, is more than just a piece of clothing—it’s an enduring symbol of youth, achievement, and American high school culture. Originally emerging in the late 19th century at Harvard University, the jacket was awarded to student-athletes who had earned a letter for their participation in varsity sports. The design was simple but striking: wool body, leather sleeves, and a large letter sewn onto the chest representing the school or team. Over time, this functional garment became a cultural icon, signaling not just athletic success but a sense of belonging and identity within a school or community. Beyond its origins on the playing field, the varsity jacket has transcended its athletic roots to become a fashion statement embraced by multiple generations. Its appeal lies in its balance between casual comfort and symbolic prestige. Worn over jeans, skirts, or hoodies, the jacket adds an air of effortless cool, simultaneously nostalgic and contemporary. Designers and streetwear brands have reimagined the classic silhouette in countless ways, experimenting with colors, materials, and embellishments, yet the essential elements—a contrasting sleeve, ribbed cuffs, and the emblematic letter—remain central to its identity. The cultural resonance of the varsity jacket extends into music, film, and social media. From 1980s teen movies to hip-hop videos and modern Instagram aesthetics, it represents both achievement and rebellion, a garment</p> <p>Pavement’s “Major Leagues” stands out as one of the band’s most quietly powerful and emotionally resonant tracks, serving as a reflective close to their original recording career. From the first echoing piano chords and measured, unhurried drums, the song establishes a mood of subdued melancholy tinged with subtle grandeur. Stephen Malkmus’s vocals glide effortlessly over the instrumentation, alternating between confessional intimacy and cryptic detachment. Lines like “Lip balm on watery clay / Relationships, hey hey hey” capture the awkward humor, vulnerability, and bittersweet tension inherent in human connection, balancing emotional weight with playful ambiguity. Musically, “Major Leagues” exemplifies Pavement’s ability to blend casual indie rock textures with sophisticated layering. The guitars are both delicate and atmospheric, the percussion steady yet understated, and Nigel Godrich’s production ensures every element is crisp and warm without ever feeling overproduced. The recurring refrain, “bring on the major leagues,” acts as a provocative invitation — a flirtation with risk, commitment, and emotional exposure. There’s a tension throughout the track between desire and hesitation, rendering it intimate while simultaneously resonating on a universal level. Though reportedly recorded in only one or two takes, the song exudes precision and clarity, reflecting the band’s instinctive songwriting prowess. Its understated grandeur, clever lyricism, and</p>			<p>The varsity jacket, often called the letterman jacket, is more than just a piece of clothing—it’s an enduring symbol of youth, achievement, and American high school culture. Originally emerging in the late 19th century at Harvard University, the jacket was awarded to student-athletes who had earned a letter for their participation in varsity sports. The design was simple but striking: wool body, leather sleeves, and a large letter sewn onto the chest representing the school or team. Over time, this functional garment became a cultural icon, signaling not just athletic success but a sense of belonging and identity within a school or community. Beyond its origins on the playing field, the varsity jacket has transcended its athletic roots to become a fashion statement embraced by multiple generations. Its appeal lies in its balance between casual comfort and symbolic prestige. Worn over jeans, skirts, or hoodies, the jacket adds an air of effortless cool, simultaneously nostalgic and contemporary. Designers and streetwear brands have reimagined the classic silhouette in countless ways, experimenting</p> <p>Pavement’s “Major Leagues” stands out as one of the band’s most quietly powerful and emotionally resonant tracks, serving as a reflective close to their original recording career. From the first echoing piano chords and measured, unhurried drums, the song establishes a mood of subdued melancholy tinged with subtle grandeur. Stephen Malkmus’s vocals glide effortlessly over the instrumentation, alternating between confessional intimacy and cryptic detachment. Lines like “Lip balm on watery clay / Relationships, hey hey hey” capture the awkward humor, vulnerability, and bittersweet tension inherent in human connection, balancing emotional weight with playful ambiguity. Musically, “Major Leagues” exemplifies Pavement’s ability to blend casual indie rock textures with sophisticated layering. The guitars are both delicate and atmospheric, the percussion steady yet understated, and Nigel Godrich’s production ensures every element is crisp and warm without ever feeling overproduced. The recurring refrain, “bring on the major leagues,” acts as a provocative invitation — a flirtation with risk,</p>			<p>The varsity jacket, often called the letterman jacket, is more than just a piece of clothing—it’s an enduring symbol of youth, achievement, and American high school culture. Originally emerging in the late 19th century at Harvard University, the jacket was awarded to student-athletes who had earned a letter for their participation in varsity sports. The design was simple but striking: wool body, leather sleeves, and a large letter sewn onto the chest representing the school or team. Over time, this functional garment became a cultural icon, signaling not just athletic success but a sense of belonging and identity within a school or community. Beyond its origins on the playing field, the varsity jacket has transcended its athletic roots to become a fashion statement embraced by multiple generations. Its appeal lies in its balance between casual comfort and symbolic prestige. Worn over jeans, skirts, or hoodies, the jacket adds an air of effortless cool, simultaneously nostalgic and contemporary. Designers and streetwear brands have reimagined the classic silhouette in countless ways, experimenting with colors, materials, and embellishments, yet the essential elements—a contrasting sleeve, ribbed cuffs, and the emblematic letter—remain central to its identity. The cultural resonance of the varsity jacket extends into music, film, and social media. From 1980s teen movies to hip-hop videos and modern Instagram aesthetics, it represents both achievement and rebellion, a garment</p> <p>Pavement’s “Major Leagues” stands out as one of the band’s most quietly powerful and emotionally resonant tracks, serving as a reflective close to their original recording career. From the first echoing piano chords and measured, unhurried drums, the song establishes a mood of subdued melancholy tinged with subtle grandeur. Stephen Malkmus’s vocals glide effortlessly over the instrumentation, alternating between confessional intimacy and cryptic detachment. Lines like “Lip balm on watery clay / Relationships, hey hey hey” capture the awkward humor, vulnerability, and bittersweet tension inherent in human connection, balancing emotional weight with playful ambiguity. Musically, “Major Leagues” exemplifies Pavement’s ability to blend casual indie rock textures with sophisticated layering. The guitars are both delicate and atmospheric, the percussion steady yet understated, and Nigel Godrich’s production ensures every element is crisp and warm without ever feeling overproduced. The recurring refrain, “bring on the major leagues,” acts as a provocative invitation — a flirtation with risk, commitment, and emotional exposure. There’s a tension throughout the track between desire and hesitation, rendering it intimate while simultaneously resonating on a universal level. Though reportedly recorded in only one or two takes, the song exudes precision and clarity, reflecting the band’s instinctive songwriting prowess. Its understated grandeur, clever lyricism, and nuanced instrumentation showcase Pavement at the peak of their artistic subtlety. In the broader context of the band’s discography, “Major Leagues” shares the melancholic wit of “Gold</p>		

**Julius Winfield
Erving II, “DR. J”
was born
ON FEBRUARY
22, 1950,
in Roosevelt,**

**(1977), Back of
HOLLYWOOD*
Slam Dunk
ALL STAR GAME
Jefferson High
VARSITY
Hall of Fame
MAJOR LEAGUES
White tee
NEW YORK CITY**

**Space Invaders
ATARI 8 BIT
brusselmans
STEDELIJK
New Collection
Spring, Summer
B. LANCASTER
Frankenheimer
RAYGUN
MAGAZINE #23**

The Hollywood Sign is an American landmark and cultural icon overlooking Hollywood, Los Angeles, California. Originally the Hollywoodland Sign, it is situated on Mount Lee, in the Beachwood Canyon area of the Santa Monica Mountains. Spelling out the word “Hollywood” in 50-foot-tall (15.2 m) white uppercase letters and 450 feet (137.2 m) long, it was originally erected in 1923 as a temporary advertisement for a local real estate development, but due to increasing recognition the sign was left up, and replaced in 1978 with a more durable all-steel structure. Among the best-known landmarks in both California and the United States, the sign makes frequent appearances in popular culture, particularly in establishing shots for films and television programs set in or around Hollywood. Signs of similar style, but spelling different words, are frequently seen as parodies. The Hollywood Chamber of Commerce holds trademark rights to the Hollywood Sign but only for certain uses. Because of its widespread recognizability, the sign has been a frequent target of pranks and vandalism across the decades. It has since undergone restoration, including the installation of a security system to deter mischief. The sign is protected and promoted by the non-profit “The Hollywood Sign Trust”, while its site and the surrounding land are part of Griffith Park. Visitors can hike to the sign from the Bronson Canyon entrance to Griffith Park or from Griffith Observatory. There is also a trailhead near the Lake Hollywood Reservoir outside of Griffith Park, and although not an access point in itself, there is a popular scenic vista point around Lake

Hollywood Park near the trailhead. The original sign was erected in 1923 and originally read “HOLLYWOODLAND” to promote the name of a new housing development in the hills above the Hollywood district of Los Angeles. Real estate developers Woodruff and Shoults called their development “Hollywoodland” and advertised it as a “superb environment without excessive cost on the Hollywood side of the hills.” They contracted the Crescent Sign Company to erect thirteen south-facing letters on the hillside. Crescent owner Thomas Fisk Goff (1890–1984) designed the wooden sign in 30-foot-wide (9.1 m) and 50-foot-high (15.2 m) white block letters. Studded with around 4,000 light bulbs, the completed sign alternated between flashing in successive segments “HOLLY”, “WOOD”, and “LAND” and as a whole. Below the sign was a searchlight to attract more attention. The poles that supported the sign were hauled to the site by mules. The project cost \$21,000, equivalent to \$360,000 in 2022. The sign was officially dedicated in 1923, intended to last only a year and a half. The rise of American cinema in Los Angeles during the Golden Age of Hollywood gave it widespread visibility, causing it to be left beyond that, for over a quarter century still spelling “Hollywoodland”. The illumination was switched off about 1933, new owners deciding it was too expensive. The sign’s unprotected wood-and-sheet-metal structure deteriorated over the years. After a severe windstorm on February 10, 1978, the first O was splintered and broken, resembling a lowercase u, and the third O had fallen down completely, leaving the now-dilapi-

The varsity jacket, often called the letterman jacket, is more than just a piece of clothing—it’s an enduring symbol of youth, achievement, and American high school culture. Originally emerging in the late 19th century at Harvard University, the jacket was awarded to student-athletes who had earned a letter for their participation in varsity sports. The design was simple but striking: wool body, leather sleeves, and a large letter sewn onto the chest representing the school or team. Over time, this functional garment became a cultural icon, signaling not just athletic success but a sense of belonging and identity within a school or community. Beyond its origins on the playing field, the varsity jacket has transcended its athletic roots to become a fashion statement embraced by multiple generations. Its appeal lies in its balance between casual comfort and symbolic prestige. Worn over jeans, skirts, or hoodies, the jacket adds an air of effortless cool, simultaneously nostalgic and contemporary. Designers and streetwear brands have reimagined the classic silhouette in countless ways, experimenting with colors, materials, and embellishments, yet the essential elements—a contrasting sleeve, ribbed cuffs, and the emblematic letter—remain central to its identity. The cultural resonance of the varsity jacket extends into music, film, and social media. From 1980s teen movies to hip-hop videos and modern Instagram aesthetics, it represents both

Pavement’s “Major Leagues” stands out as one of the band’s most quietly powerful and emotionally resonant tracks, serving as a reflective close to their original recording career. From the first echoing piano chords and measured, unhurried drums, the song establishes a mood of subdued melancholy tinged with subtle grandeur. Stephen Malkmus’s vocals glide effortlessly over the instrumentation, alternating between confessional intimacy and cryptic detachment. Lines like “Lip balm on watery clay / Relationships, hey hey hey” capture the awkward humor, vulnerability, and bittersweet tension inherent in human connection, balancing emotional weight with playful ambiguity. Musically, “Major Leagues” exemplifies Pavement’s ability to blend casual indie rock textures with sophisticated layering. The guitars are both delicate and atmospheric, the percussion steady yet understated, and Nigel Godrich’s production ensures every element is crisp and warm without ever feeling overproduced. The recurring refrain, “bring on the major leagues,” acts as a provocative invitation — a flirtation with risk, commitment, and emotional exposure. There’s a tension throughout the track between desire and hesitation, rendering it intimate while simultaneously resonating on a universal level. Though reportedly recorded in only one or two takes, the song exudes precision and clarity, reflecting the band’s instinctive songwriting prowess. Its under-

The varsity jacket, often called the letterman jacket, is more than just a piece of clothing—it’s an enduring symbol of youth, achievement, and American high school culture. Originally emerging in the late 19th century at Harvard University, the jacket was awarded to student-athletes who had earned a letter for their participation in varsity sports. The design was simple but striking: wool body, leather sleeves, and a large letter sewn onto the chest representing the school or team. Over time, this functional garment became a cultural icon, signaling not just athletic success but a sense of belonging and identity within a school or community. Beyond its origins on the playing field, the varsity jacket has transcended its athletic roots to become a fashion statement embraced by multiple generations. Its appeal lies in its balance between casual comfort and symbolic prestige. Worn over jeans, skirts, or hoodies, the jacket adds an air of effortless cool, simultaneously nostalgic and contemporary. Designers and streetwear brands have reimagined the classic silhouette in countless

Pavement’s “Major Leagues” stands out as one of the band’s most quietly powerful and emotionally resonant tracks, serving as a reflective close to their original recording career. From the first echoing piano chords and measured, unhurried drums, the song establishes a mood of subdued melancholy tinged with subtle grandeur. Stephen Malkmus’s vocals glide effortlessly over the instrumentation, alternating between confessional intimacy and cryptic detachment. Lines like “Lip balm on watery clay / Relationships, hey hey hey” capture the awkward humor, vulnerability, and bittersweet tension inherent in human connection, balancing emotional weight with playful ambiguity. Musically, “Major Leagues” exemplifies Pavement’s ability to blend casual indie rock textures with sophisticated layering. The guitars are both delicate and atmospheric, the percussion steady yet understated, and Nigel Godrich’s production ensures every element is crisp and warm without ever feeling overproduced. The recurring refrain, “bring on the major leagues,” acts as a provocative invi-

The varsity jacket, often called the letterman jacket, is more than just a piece of clothing—it’s an enduring symbol of youth, achievement, and American high school culture. Originally emerging in the late 19th century at Harvard University, the jacket was awarded to student-athletes who had earned a letter for their participation in varsity sports. The design was simple but striking: wool body, leather sleeves, and a large letter sewn onto the chest representing the school or team. Over time, this functional garment became a cultural icon, signaling not just athletic success but a sense of belonging and identity within a school or community. Beyond its origins on the playing field, the varsity jacket has transcended its athletic roots to become a fashion statement embraced by multiple generations. Its appeal lies in its balance between casual comfort and symbolic prestige. Worn over jeans, skirts, or hoodies, the jacket adds an air of effortless cool, simultaneously nostalgic and contemporary. Designers and streetwear brands have reimagined the classic silhouette in countless ways, experimenting with colors, materials, and embellishments, yet the essential elements—a contrasting sleeve, ribbed cuffs, and the emblematic letter—remain central to its identity. The cultural resonance of the varsity jacket extends into music, film, and social media. From 1980s teen movies to hip-hop videos and modern Instagram aesthetics, it represents both achievement and rebellion, a garment that conveys confidence and belonging. Its symbolism has broadened: now, wearing a varsity jacket need

Pavement’s “Major Leagues” stands out as one of the band’s most quietly powerful and emotionally resonant tracks, serving as a reflective close to their original recording career. From the first echoing piano chords and measured, unhurried drums, the song establishes a mood of subdued melancholy tinged with subtle grandeur. Stephen Malkmus’s vocals glide effortlessly over the instrumentation, alternating between confessional intimacy and cryptic detachment. Lines like “Lip balm on watery clay / Relationships, hey hey hey” capture the awkward humor, vulnerability, and bittersweet tension inherent in human connection, balancing emotional weight with playful ambiguity. Musically, “Major Leagues” exemplifies Pavement’s ability to blend casual indie rock textures with sophisticated layering. The guitars are both delicate and atmospheric, the percussion steady yet understated, and Nigel Godrich’s production ensures every element is crisp and warm without ever feeling overproduced. The recurring refrain, “bring on the major leagues,” acts as a provocative invitation — a flirtation with risk, commitment, and emotional exposure. There’s a tension throughout the track between desire and hesitation, rendering it intimate while simultaneously resonating on a universal level. Though reportedly recorded in only one or two takes, the song exudes precision and clarity, reflecting the band’s instinctive songwriting prowess. Its understated grandeur, clever lyricism, and nuanced instrumentation showcase Pavement at the peak of their artistic subtlety. In the broader context of the band’s discography, “Major

**Julius Winfield
Erving II, “DR. J”
was born
ON FEBRUARY
22, 1950,
in Roosevelt,**

(1977), Back of HOLLYWOOD* Slam Dunk ALL STAR GAME Jefferson High VARSITY Hall of Fame MAJOR LEAGUES White tee NEW YORK CITY	Space Invaders ATARI 8 BIT brusselmans STEDELIJK New Collection Spring, Summer B. LANCASTER Frankenheimer RAYGUN MAGAZINE #23
---	--

The Hollywood Sign is an American landmark and cultural icon overlooking Hollywood, Los Angeles, California. Originally the Hollywoodland Sign, it is situated on Mount Lee, in the Beachwood Canyon area of the Santa Monica Mountains. Spelling out the word “Hollywood” in 50-foot-tall (15.2 m) white uppercase letters and 450 feet (137.2 m) long, it was originally erected in 1923 as a temporary advertisement for a local real estate development, but due to increasing recognition the sign was left up, and replaced in 1978 with a more durable all-steel structure. Among the best-known landmarks in both California and the United States, the sign makes frequent appearances in popular culture, particularly in establishing shots for films and television programs set in or around Hollywood. Signs of similar style, but spelling different words, are frequently seen as parodies. The Hollywood Chamber of Commerce holds trademark rights to the Hollywood Sign but only for certain uses. Because of its widespread recognizability, the sign has been a frequent target of pranks and vandalism across the decades. It has since undergone restoration, including the installation of a security system to deter mischief. The sign is protected and promoted by the nonprofit “The Hollywood Sign Trust”, while its site and the surrounding land are part of Griffith Park. Visitors can hike to the sign from the Bronson Canyon entrance to Griffith Park or from Griffith Observatory. There is also a trailhead near the Lake Hollywood Reservoir outside of Griffith Park, and although not an access point in itself, there is a popu-

lar scenic vista point around Lake Hollywood Park near the trailhead. The original sign was erected in 1923 and originally read “HOLLYWOODLAND” to promote the name of a new housing development in the hills above the Hollywood district of Los Angeles. Real estate developers Woodruff and Shoults called their development “Hollywoodland” and advertised it as a “superb environment without excessive cost on the Hollywood side of the hills.” They contracted the Crescent Sign Company to erect thirteen south-facing letters on the hillside. Crescent owner Thomas Fisk Goff (1890–1984) designed the wooden sign in 30-foot-wide (9.1 m) and 50-foot-high (15.2 m) white block letters. Studded with around 4,000 light bulbs, the completed sign alternated between flashing in successive segments “HOLLY”, “WOOD”, and “LAND” and as a whole. Below the sign was a searchlight to attract more attention. The poles that supported the sign were hauled to the site by mules. The project cost \$21,000, equivalent to \$360,000 in 2022. The sign was officially dedicated in 1923, intended to last only a year and a half. The rise of American cinema in Los Angeles during the Golden Age of Hollywood gave it widespread visibility, causing it to be left beyond that, for over a quarter century still spelling “Hollywoodland”. The illumination was switched off about 1933, new owners deciding it was too expensive. The sign’s unprotected wood-and-sheet-metal structure deteriorated over the years. After a severe windstorm on February 10, 1978, the first O was splintered and broken, resembling a lowercase

The varsity jacket, often called the letterman jacket, is more than just a piece of clothing—it’s an enduring symbol of youth, achievement, and American high school culture. Originally emerging in the late 19th century at Harvard University, the jacket was awarded to student-athletes who had earned a letter for their participation in varsity sports. The design was simple but striking: wool body, leather sleeves, and a large letter sewn onto the chest representing the school or team. Over time, this functional garment became a cultural icon, signaling not just athletic success but a sense of belonging and identity within a school or community. Beyond its origins on the playing field, the varsity jacket has transcended its athletic roots to become a fashion statement embraced by multiple generations. Its appeal lies in its balance between casual comfort and symbolic prestige. Worn over jeans, skirts, or hoodies, the jacket adds an air of effortless cool, simultaneously nostalgic and contemporary. Designers and streetwear brands have reimagined the classic silhouette in countless ways, experimenting with colors, materials, and embellishments, yet the essential elements—a contrasting sleeve, ribbed cuffs, and the emblematic letter—remain central to its identity. The cultural resonance of the varsity jacket extends into music, film, and social media. From 1980s teen movies to hip-hop videos and modern Instagram

Pavement’s “Major Leagues” stands out as one of the band’s most quietly powerful and emotionally resonant tracks, serving as a reflective close to their original recording career. From the first echoing piano chords and measured, unhurried drums, the song establishes a mood of subdued melancholy tinged with subtle grandeur. Stephen Malkmus’s vocals glide effortlessly over the instrumentation, alternating between confessional intimacy and cryptic detachment. Lines like “Lip balm on watery clay / Relationships, hey hey hey” capture the awkward humor, vulnerability, and bittersweet tension inherent in human connection, balancing emotional weight with playful ambiguity. Musically, “Major Leagues” exemplifies Pavement’s ability to blend casual indie rock textures with sophisticated layering. The guitars are both delicate and atmospheric, the percussion steady yet understated, and Nigel Godrich’s production ensures every element is crisp and warm without ever feeling overproduced. The recurring refrain, “bring on the major leagues,” acts as a provocative invitation — a flirtation with risk, commitment, and emotional exposure. There’s a tension throughout the track between desire and hesitation, rendering it intimate while simultaneously resonating on a universal level. Though reportedly recorded in only one or two takes, the song exudes precision and clarity, reflecting the band’s instinctive songwriting

The varsity jacket, often called the letterman jacket, is more than just a piece of clothing—it’s an enduring symbol of youth, achievement, and American high school culture. Originally emerging in the late 19th century at Harvard University, the jacket was awarded to student-athletes who had earned a letter for their participation in varsity sports. The design was simple but striking: wool body, leather sleeves, and a large letter sewn onto the chest representing the school or team. Over time, this functional garment became a cultural icon, signaling not just athletic success but a sense of belonging and identity within a school or community. Beyond its origins on the playing field, the varsity jacket has transcended its athletic roots to become a fashion statement embraced by multiple generations. Its appeal lies in its balance between casual comfort and symbolic prestige. Worn over jeans, skirts, or hoodies, the jacket adds an air of effortless cool, simultaneously nostalgic and contemporary. Designers and streetwear brands have reimagined

Pavement’s “Major Leagues” stands out as one of the band’s most quietly powerful and emotionally resonant tracks, serving as a reflective close to their original recording career. From the first echoing piano chords and measured, unhurried drums, the song establishes a mood of subdued melancholy tinged with subtle grandeur. Stephen Malkmus’s vocals glide effortlessly over the instrumentation, alternating between confessional intimacy and cryptic detachment. Lines like “Lip balm on watery clay / Relationships, hey hey hey” capture the awkward humor, vulnerability, and bittersweet tension inherent in human connection, balancing emotional weight with playful ambiguity. Musically, “Major Leagues” exemplifies Pavement’s ability to blend casual indie rock textures with sophisticated layering. The guitars are both delicate and atmospheric, the percussion steady yet understated, and Nigel Godrich’s production ensures every element is crisp and warm without ever feeling overproduced. The recurring refrain, “bring on the major leagues,” acts as

The varsity jacket, often called the letterman jacket, is more than just a piece of clothing—it’s an enduring symbol of youth, achievement, and American high school culture. Originally emerging in the late 19th century at Harvard University, the jacket was awarded to student-athletes who had earned a letter for their participation in varsity sports. The design was simple but striking: wool body, leather sleeves, and a large letter sewn onto the chest representing the school or team. Over time, this functional garment became a cultural icon, signaling not just athletic success but a sense of belonging and identity within a school or community. Beyond its origins on the playing field, the varsity jacket has transcended its athletic roots to become a fashion statement embraced by multiple generations. Its appeal lies in its balance between casual comfort and symbolic prestige. Worn over jeans, skirts, or hoodies, the jacket adds an air of effortless cool, simultaneously nostalgic and contemporary. Designers and streetwear brands have reimagined the classic silhouette in countless ways, experimenting with colors, materials, and embellishments, yet the essential elements—a contrasting sleeve, ribbed cuffs, and the emblematic letter—remain central to its identity. The cultural resonance of the varsity jacket extends into music, film, and social media. From 1980s teen movies to hip-hop videos and modern Instagram aesthetics, it represents both achievement and rebellion, a garment that conveys confidence and belonging. Its symbolism has broadened: now, wearing a varsity ja-

Pavement’s “Major Leagues” stands out as one of the band’s most quietly powerful and emotionally resonant tracks, serving as a reflective close to their original recording career. From the first echoing piano chords and measured, unhurried drums, the song establishes a mood of subdued melancholy tinged with subtle grandeur. Stephen Malkmus’s vocals glide effortlessly over the instrumentation, alternating between confessional intimacy and cryptic detachment. Lines like “Lip balm on watery clay / Relationships, hey hey hey” capture the awkward humor, vulnerability, and bittersweet tension inherent in human connection, balancing emotional weight with playful ambiguity. Musically, “Major Leagues” exemplifies Pavement’s ability to blend casual indie rock textures with sophisticated layering. The guitars are both delicate and atmospheric, the percussion steady yet understated, and Nigel Godrich’s production ensures every element is crisp and warm without ever feeling overproduced. The recurring refrain, “bring on the major leagues,” acts as a provocative invitation — a flirtation with risk, commitment, and emotional exposure. There’s a tension throughout the track between desire and hesitation, rendering it intimate while simultaneously resonating on a universal level. Though reportedly recorded in only one or two takes, the song exudes precision and clarity, reflecting the band’s instinctive songwriting prowess. Its understated grandeur, clever lyricism, and nuanced instrumentation showcase Pavement at the peak of their artistic subtlety. In the broader context of the band’s

Alternates

Milwaukee

Wisconsin, US

Stylistic set: none

Milwaukee

Wisconsin, US

Stylistic set: 01 (closed terminals)

THE GOLDFINGER

Quantico

The Sixth Sense OST

Afterlife

Sharp Objects

Chernobyl

Season 2 ep. 22

30 ROCK

Who's that Girl?

NIP/TUCK

Floor 3, Room 8

Interstate 60

34 Antetokounmpo

Page 1 of 9

WAVE/XRAY, wave/xyz

THE GOLDFINGER

Quantico

The Sixth Sense OST

Afterlife

Sharp Objects

Chernobyl

Season 2 ep. 22

30 ROCK

Who's that Girl?

NIP/TUCK

Floor ③, Room ⑧

Intersate ⑥ ⑩

③ ④ Antetokounmpo

Page ① of ⑨

WAVE/XRAY, wave/xyz

GAME 2,
NBA Playoffs

Stylistic set: none

GAME 2,
NBA Playoffs

Stylistic set: 01 (closed terminals)

THE GOLDFINGER

Quantico

The Sixth Sense OST

Afterlife

Sharp Objects

Chernobyl

Season 2 ep. 22

30 ROCK

Who's that Girl?

NIP/TUCK

Floor 3, Room 8

Interstate 60

34 Antetokounmpo

Page 1 of 9

WAVE/XRAY, wave/xyz

THE GOLDFINGER

Quantico

The Sixth Sense OST

Afterlife

Sharp Objects

Chernobyl

Season 2 ep. 22

30 ROCK

Who's that Girl?

NIP/TUCK

Floor ③, Room ⑧

Intersate ⑥ ⑩

③ ④ Antetokounmpo

Page ① of ⑨

WAVE/XRAY, wave/xyz

COLLEGE
Sportsware

Stylistic set: none

COLLEGE
Sportsware

Stylistic set: 01 (closed terminals)

THE GOLDFINGER

Quantico

The Sixth Sense OST

Afterlife

Sharp Objects

Chernobyl

Season 2 ep. 22

30 ROCK

Who's that Girl?

NIP/TUCK

Floor 3, Room 8

Interstate 60

34 Antetokounmpo

Page 1 of 9

WAVE/XRAY, wave/xyz

THE GOLDFINGER

Quantico

The Sixth Sense OST

Afterlife

Sharp Objects

Chernobyl

Season 2 ep. 22

30 ROCK

Who's that Girl?

NIP/TUCK

Floor ③, Room ⑧

Intersate ⑥ ⑩

③ ④ Antetokounmpo

Page ① of ⑨

WAVE/XRAY, wave/xyz

JFK Arrivals
GATE C3

Stylistic set: none

JFK Arrivals
GATE C3

Stylistic set: 01 (closed terminals)

THE GOLDFINGER

Quantico

The Sixth Sense OST

Afterlife

Sharp Objects

Chernobyl

Season 2 ep. 22

30 ROCK

Who's that Girl?

NIP/TUCK

Floor 3, Room 8

Interstate 60

34 Antetokounmpo

Page 1 of 9

WAVE/XRAY, wave/xyz

THE GOLDFINGER

Quantico

The Sixth Sense OST

Afterlife

Sharp Objects

Chernobyl

Season 2 ep. 22

30 ROCK

Who's that Girl?

NIP/TUCK

Floor ③, Room ⑧

Intersate ⑥①

③④ Antetokounmpo

Page ① of ⑨

WAVE/XRAY, wave/xyz

BOOGIE

Nights, 1997

Stylistic set: none

BOOGIE

Nights, 1997

Stylistic set: 01 (closed terminals)

THE GOLDFINGER
Quantico
The Sixth Sense OST
Afterlife
Sharp Objects
Chernobyl
Season 2 ep. 22
30 ROCK
Who's that Girl?
NIP/TUCK
Floor 3, Room 8
Interstate 60
34 Antetokounmpo
Page 1 of 9
WAVE/XRAY, wave/xyz

THE GOLDFINGER
Quantico
The Sixth Sense OST
Afterlife
Sharp Objects
Chernobyl
Season 2 ep. 22
30 ROCK
Who's that Girl?
NIP/TUCK
Floor ③, Room ⑧
Intersate ⑥①
③④ Antetokounmpo
Page ① of ⑨
WAVE/XRAY, wave/xyz

LIGUE 2
Calendrier

Stylistic set: none

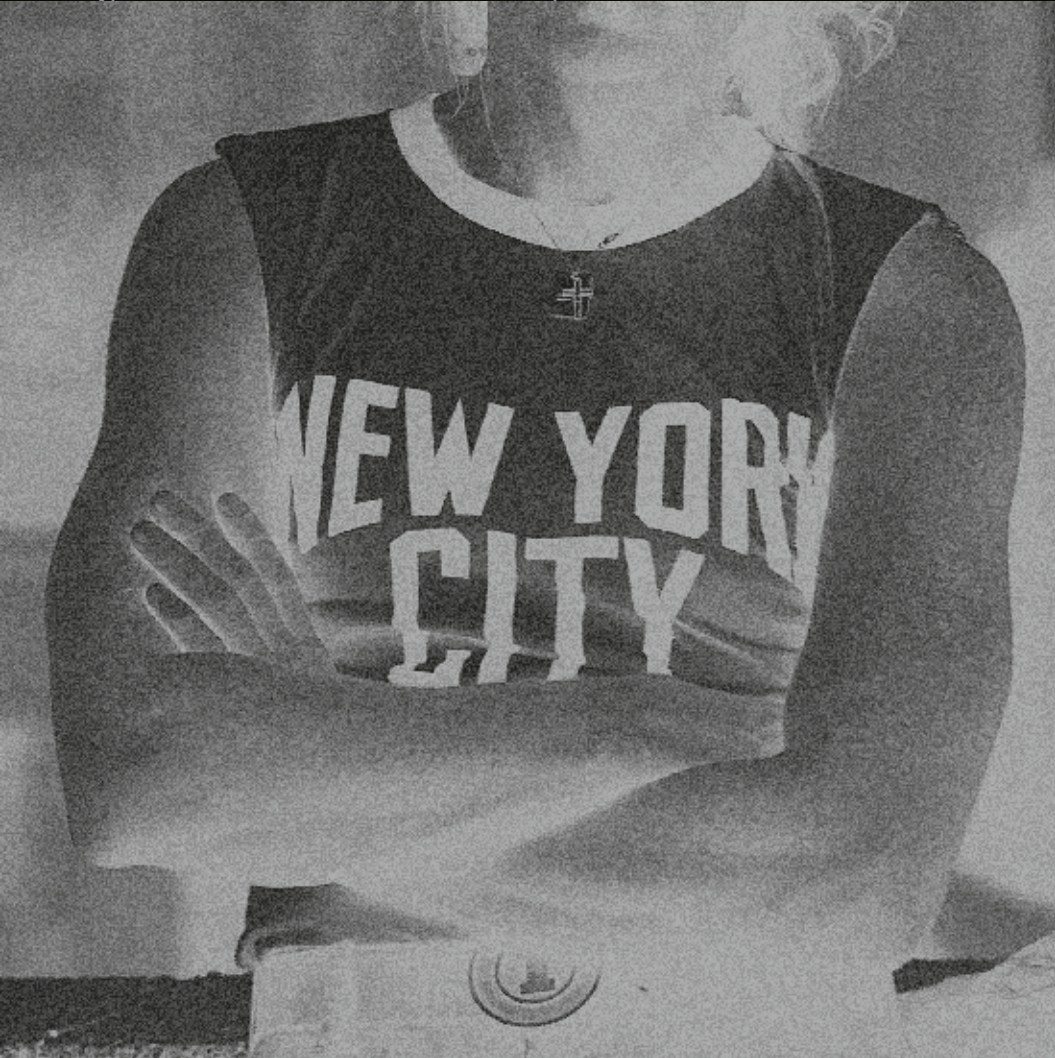
LIGUE 2
Calendrier

Stylistic set: 01 (closed terminals)

THE GOLDFINGER
Quantico
The Sixth Sense OST
Afterlife
Sharp Objects
Chernobyl
Season 2 ep. 22
30 ROCK
Who's that Girl?
NIP/TUCK
Floor 3, Room 8
Interstate 60
34 Antetokounmpo
Page 1 of 9
WAVE/XRAY, wave/xyz

THE GOLDFINGER
Quantico
The Sixth Sense OST
Afterlife
Sharp Objects
Chernobyl
Season 2 ep. 22
30 ROCK
Who's that Girl?
NIP/TUCK
Floor ③, Room ⑧
Intersate ⑥①
③④ Antetokounmpo
Page ① of ⑨
WAVE/XRAY, wave/xyz

Inputs



Bob Gruen, John Lennon on his rooftop at the Dakota in New York City, August 29-1974



Julius Erving, New York Nets, 1975



Michael J. Fox in Teen Wolf wearing a basketball jersey, 1985



Varsity Jacket, Happy Days, 1974-1984



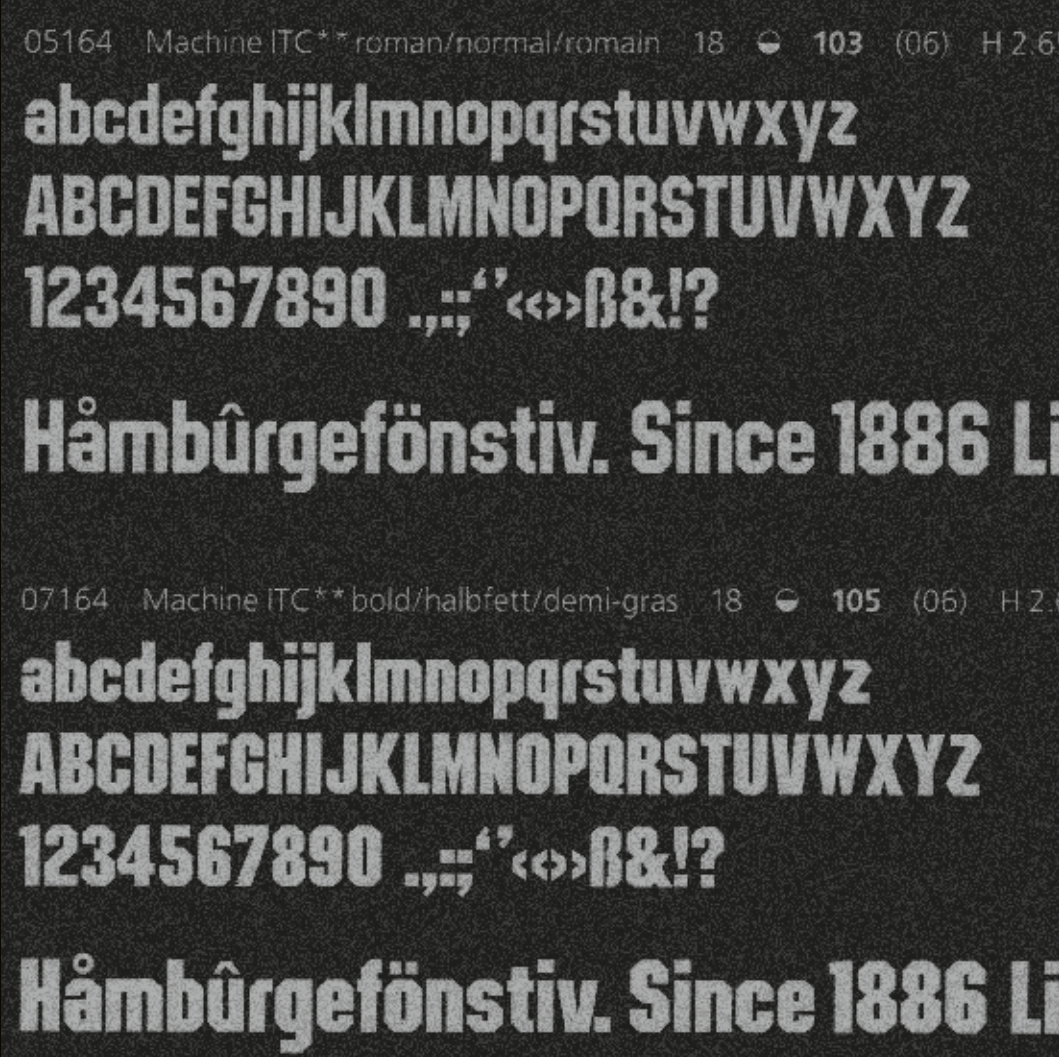
Edward Ruscha, Hollywood, 1968 (Detail)



Brusselmans exhibition catalogue, Wim Crouwel, 1960



Space Invaders logotype set in ITC Machine, 1978



ITC Machine, designed by Ronné Bonder and Tom Carnase, 1970

BY RAIL ROAD OR STEAMBOAT

Six Line No. 173.

TO PAGE'S Type Factory

Eight Line No. 173.

FRANKLIN STREET

Ten Line No. 173.

NORWICH 2345

Twelve Line No. 173.

GRAND SALE

Specimens of Wood Type, Wm. H. Page Wood Type Co., 1886

INTRIGUE intrigue

ABDEGH

ABCDEFGHIJKLMNQRSTU

adefghkopi

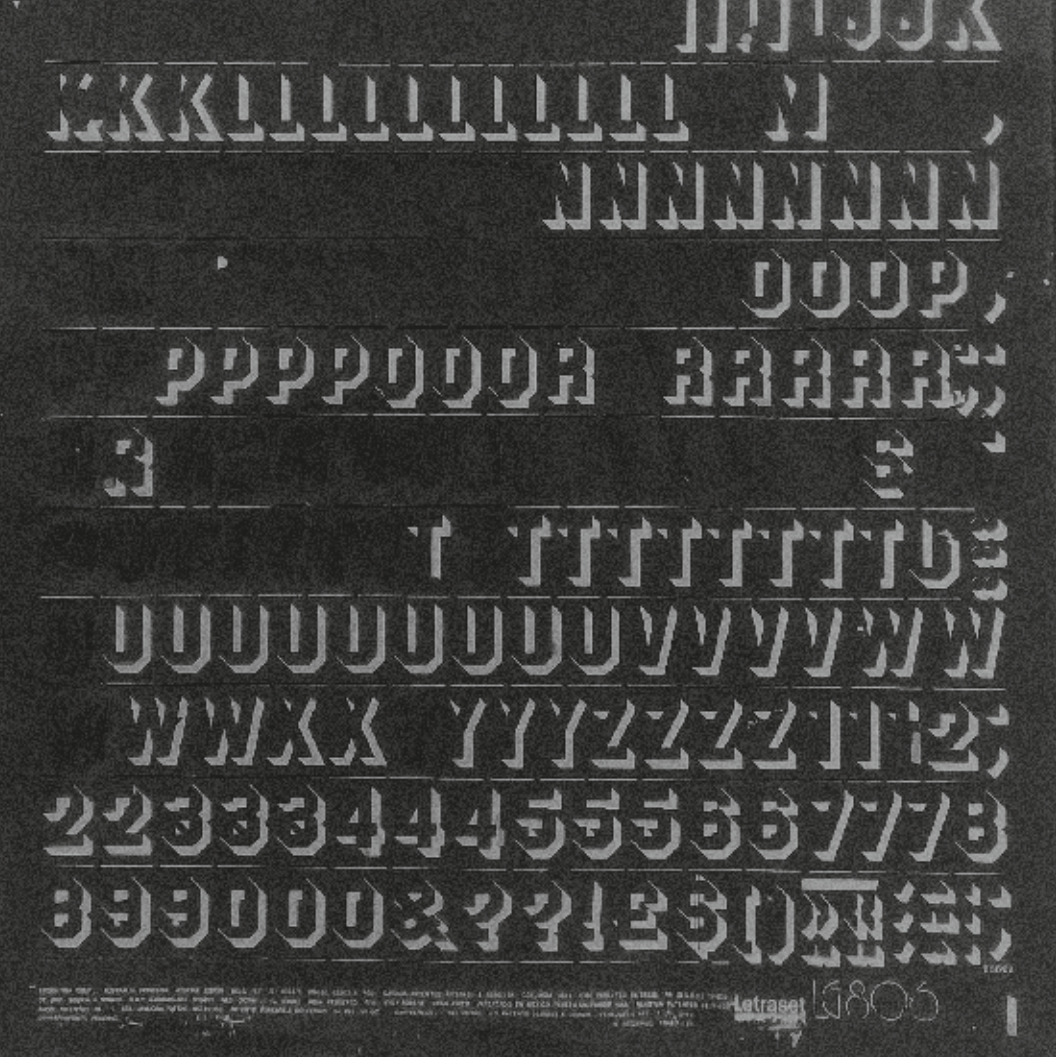
lett

CUSTOM PAGE 216

Intrigue by Lettergraphics, approx. 1969



Berthold City, Type Specimen



ITC Superstar, designed by Colin Brignall, 1970

About

FT Athletic is a versatile display font with the feel of old video games, masking tape and basketball matches. It is inspired by sportswear and college graphics, old videogame packaging and DIY fonts. FT Athletic's rough, distinctive look is also influenced by typefaces such as ITC Machine, ITC Superstar and Berthold City. The typeface is available in six weights, in both proportional and monospaced versions.